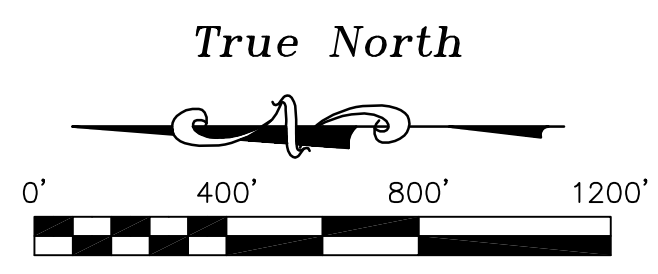


- Legend**
- Property Line
 - Limits of Jurisdiction
 - County Boundary Line
 - Town Boundary Line
 - Right-of-Way or Adjacent Property Line
 - Perennial Tributary
 - Intermittent Tributary
 - Wetland Delineation
 - Logging Road
 - APA Jurisdictional Wetland
 - Non-APA Jurisdictional Wetland
 - Open Water Containing Submerged Aquatic Vegetation (APA Jurisdictional)
 - ** Note: Those Areas Deeper Than 2 Meters Are Non-APA Jurisdictional.
 - Transect #7 (17U) Data Sheet Location
 - Photo 1 Photograph Location and Direction



Project Information

Property Owner: Woodward Lake Properties, LLC
155 Main Street, Suite D
Oneonta, NY 13820

Project Applicant: Woodward Lake Properties, LLC
155 Main Street, Suite D
Oneonta, NY 13820

Total Property Area: 1,169.63± Acres
Limits of Jurisdiction Area: 708.9± Acres

Site Coordinates (X): 43° 13' 30" N
74° 12' 11" W

Wetlands Delineated by North Country Ecological Services, Inc.
During the 2017, 2018, and 2019 Field Seasons.

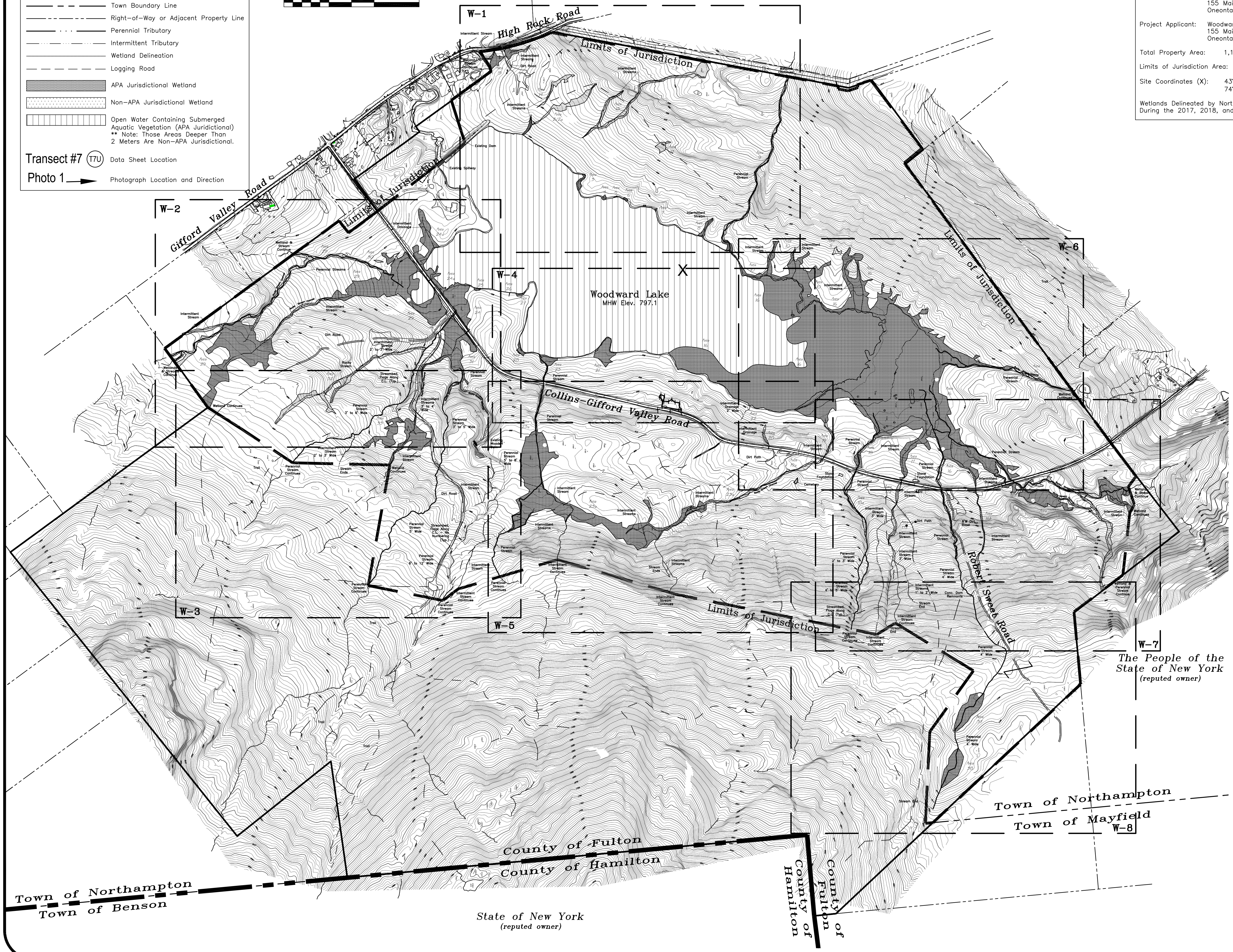
CIVIL & ARCHITECTURAL
ENGINEERING

STEVEN E. SMITH, P.E.

25 WEST FULTON STREET
GLOVERSVILLE, N.Y. 12078
(518) 725-1555

Woodward Lake
Properties, LLC

Woodward Lake Subdivision
Town of Northampton
Fulton County, NY



Aquatic Resource Summary Table

Resource	Overall Acreage	USACE Regulated Wetland Area	USACE Regulated Stream Length	APA Regulated Wetland Area	Vegetative Cover Types Present
1	0.20 ± acres	0.20 ± acres	217 ± L.F.	0.19 ± acres	PFO, PSS, Stream
2/2a	0.61 ± acres	0.61 ± acres	286 ± L.F.	0.09 ± acres	PFO, PSS, Stream
3	0.10 ± acres	0.10 ± acres	0 ± L.F.	0.10 ± acres	PFO, PSS
4	0.03 ± acres	0.03 ± acres	0 ± L.F.	0.03 ± acres	PFO, PSS
5	0.01 ± acres	0.01 ± acres	0 ± L.F.	0.01 ± acres	PFO, PSS
6	0.02 ± acres	0.02 ± acres	0 ± L.F.	0.02 ± acres	PFO, PSS
7	0.01 ± acres	0.01 ± acres	0 ± L.F.	0.01 ± acres	PFO, PSS
8	0.13 ± acres	0.13 ± acres	192 ± L.F.	0.13 ± acres	PFO, PSS
9	0.80 ± acres	0.80 ± acres	1,862 ± L.F.	0.12 ± acres	Rocky Headwater Stream
10	2.23 ± acres	2.23 ± acres	576 ± L.F.	0 ± L.F.	PFO, PSS, PEM
11	0.06 ± acres	0.06 ± acres	0 ± L.F.	0.00 ± acres	PFO
12	0.14 ± acres	0.14 ± acres	0 ± L.F.	0.00 ± acres	PFO
13	1.13 ± acres	1.13 ± acres	1,809 ± L.F.	0.00 ± acres	PSS, PEM, Stream
14	0.21 ± acres	0.21 ± acres	153 ± L.F.	0.00 ± acres	PFO, PEM, Stream
15	0.23 ± acres	0.23 ± acres	191 ± L.F.	0.00 ± acres	PFO, Stream
16	44.68 ± acres	44.68 ± acres	5,429 ± L.F.	43.98 ± acres	PFO, PSS, PEM, Stream
16a	0.23 ± acres	0.23 ± acres	2,102 ± L.F.	0.00 ± acres	Rocky Headwater Stream
16b	0.21 ± acres	0.21 ± acres	792 ± L.F.	0.00 ± acres	Rocky Headwater Stream
16c	3.27 ± acres	3.27 ± acres	3,292 ± L.F.	1.95 ± acres	PFO, Stream
17	0.76 ± acres	0.76 ± acres	548 ± L.F.	0.75 ± acres	PFO, PSS, Stream
17a	0.09 ± acres	0.09 ± acres	194 ± L.F.	0.00 ± acres	Rocky Headwater Stream
17b	0.17 ± acres	0.17 ± acres	3,311 ± L.F.	0.00 ± acres	Rocky Headwater Stream
18	0.46 ± acres	0.46 ± acres	466 ± L.F.	0.33 ± acres	PFO, PSS, Stream
18a	0.33 ± acres	0.33 ± acres	1,860 ± L.F.	0.00 ± acres	Rocky Headwater Stream
19	0.16 ± acres	0.16 ± acres	382 ± L.F.	0.03 ± acres	PFO, PSS, Stream
19a	0.36 ± acres	0.36 ± acres	854 ± L.F.	0.00 ± acres	Rocky Headwater Stream
20	0.07 ± acres	0.07 ± acres	156 ± L.F.	0.00 ± acres	Rocky Headwater Stream
21	0.60 ± acres	0.60 ± acres	0 ± L.F.	0.60 ± acres	PFO, PSS, PEM
22	0.001 ± acres	0.001 ± acres	158 ± L.F.	0.00 ± acres	PSS
23	0.26 ± acres	0.26 ± acres	266 ± L.F.	0.23 ± acres	PSS, PEM, Stream
23a	7.74 ± acres	7.74 ± acres	5,750 ± L.F.	6.99 ± acres	PFO, Stream
24/24a	2.47 ± acres	2.47 ± acres	301 ± L.F.	2.47 ± acres	PFO, PSS, PEM
25	0.03 ± acres	0.03 ± acres	0 ± L.F.	0.03 ± acres	PSS
26	0.002 ± acres	0.002 ± acres	0 ± L.F.	0.002 ± acres	PSS
27	0.04 ± acres	0.04 ± acres	0 ± L.F.	0 ± L.F.	PSS
28	0.08 ± acres	0.08 ± acres	0 ± L.F.	0.08 ± acres	PSS, PEM
29	10.46 ± acres	10.46 ± acres	5,136 ± L.F.	8.46 ± acres	PFO, PSS, PEM, Pond
30	0.02 ± acres	0.02 ± acres	0 ± L.F.	0.00 ± acres	PFO
31	2.26 ± acres	2.26 ± acres	8,523 ± L.F.	1.94 ± acres	PFO, PSS, Stream
32	1.04 ± acres	1.04 ± acres	1,852 ± L.F.	0.00 ± acres	Rocky Headwater Stream
33	1.74 ± acres	1.74 ± acres	599 ± L.F.	1.74 ± acres	Rocky Headwater Stream
37	0.92 ± acres	0.92 ± acres	604 ± L.F.	0.92 ± acres	PFO
38	0.81 ± acres	0.81 ± acres	613 ± L.F.	0.81 ± acres	PFO
Lake	85.32 ± acres	85.32 ± acres	N/A	85.32 ± acres	Mesotrophic Lake
Total	170.50 ± acres	170.50 ± acres	48,482 ± L.F.	159.56 ± acres	

(PEM - Palustrine Emergent, PSS - Palustrine Scrub Shrub, PFO - Palustrine Forested)

The People of the State of New York
(reputed owner)

No.	Description	Date
1	Revised Per APA Comments	09/16/2020
2	Revised Per APA Comments Dated March 5th 2020	06/16/2020

Revision Schedule

DRAWN BY: BCT/WRM

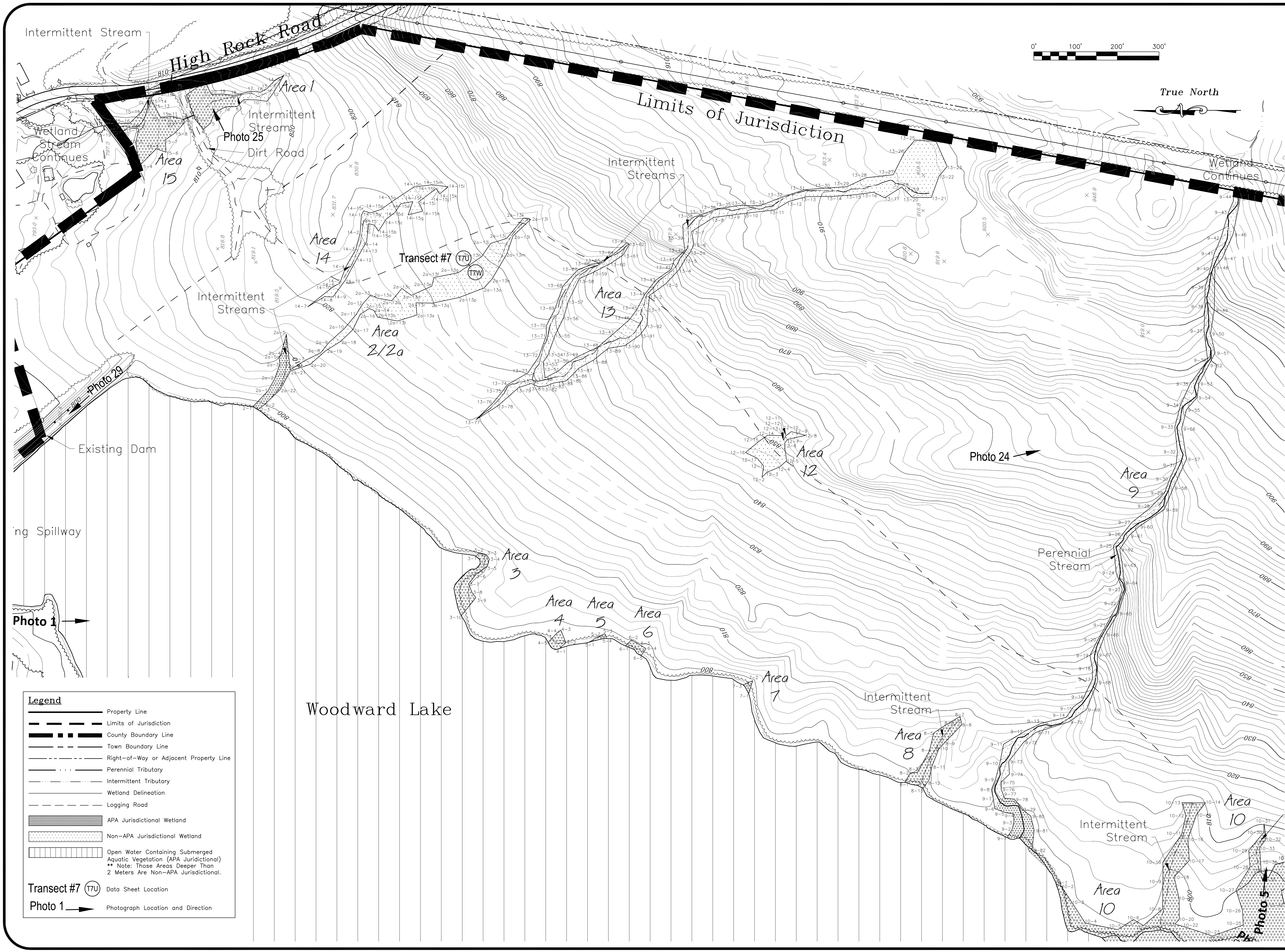
Copyright by Steven E. Smith, P.E. 2020
All Rights Reserved

Wetland Delineation

It is a violation for any person to alter the plan in any way, unless acting under the direction of an appropriately licensed person.

SHEET NAME:
Overall
Wetland Delineation Map

PAGE:
Cover



True North

CIVIL & ARCHITECTURAL
ENGINEERING
STEVEN E. SMITH, P.E.
25 WEST FULTON STREET
GLOVERSVILLE, N.Y. 12078
(518) 725-1555

Woodward Lake
Properties, LLC
Woodward Lake Subdivision
Town of Northampton
Fulton County, NY

Revised Per APA Comments	09/16/2020	
Revised Per APA Comments Dated March 29th 2020	06/16/2020	
No.	Description	Date
	Revision Schedule	
Construction Drawing		MM/00/YY
Bid Drawing		MM/00/YY
Drawing Log		
BY: BCT/WRM		

Copyright by Steven E. Smith, P.E. 2020
All Rights Reserved

Wetland Delineation

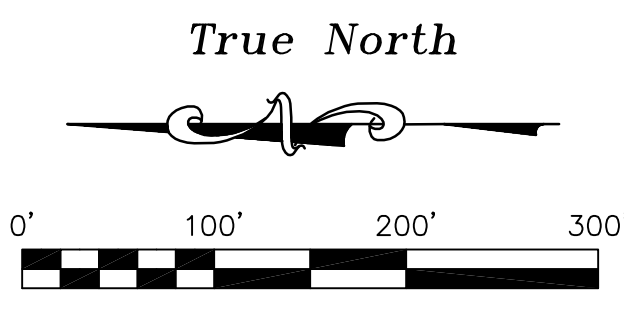
It is a violation for any person to alter the plan in any way, unless acting under the direction of an appropriately licensed person.

SHEET NAME:
Northeast
Wetland Delineations
1" = 100'

PAGE:
W-1

- Legend**
- Property Line
 - - - Limits of Jurisdiction
 - ▬▬▬ County Boundary Line
 - - - Town Boundary Line
 - - - Right-of-Way or Adjacent Property Line
 - Perennial Tributary
 - - - Intermittent Tributary
 - - - Wetland Delineation
 - - - Logging Road
 - ▨ APA Jurisdictional Wetland
 - ▨ Non-APA Jurisdictional Wetland
 - ▨ Open Water Containing Submerged Aquatic Vegetation (APA Jurisdictional)
** Note: Those Areas Deeper Than 2 Meters Are Non-APA Jurisdictional.
 - ⊙ Transect #7 (T7U) Data Sheet Location
 - ➔ Photo 1 Photograph Location and Direction

Woodward Lake

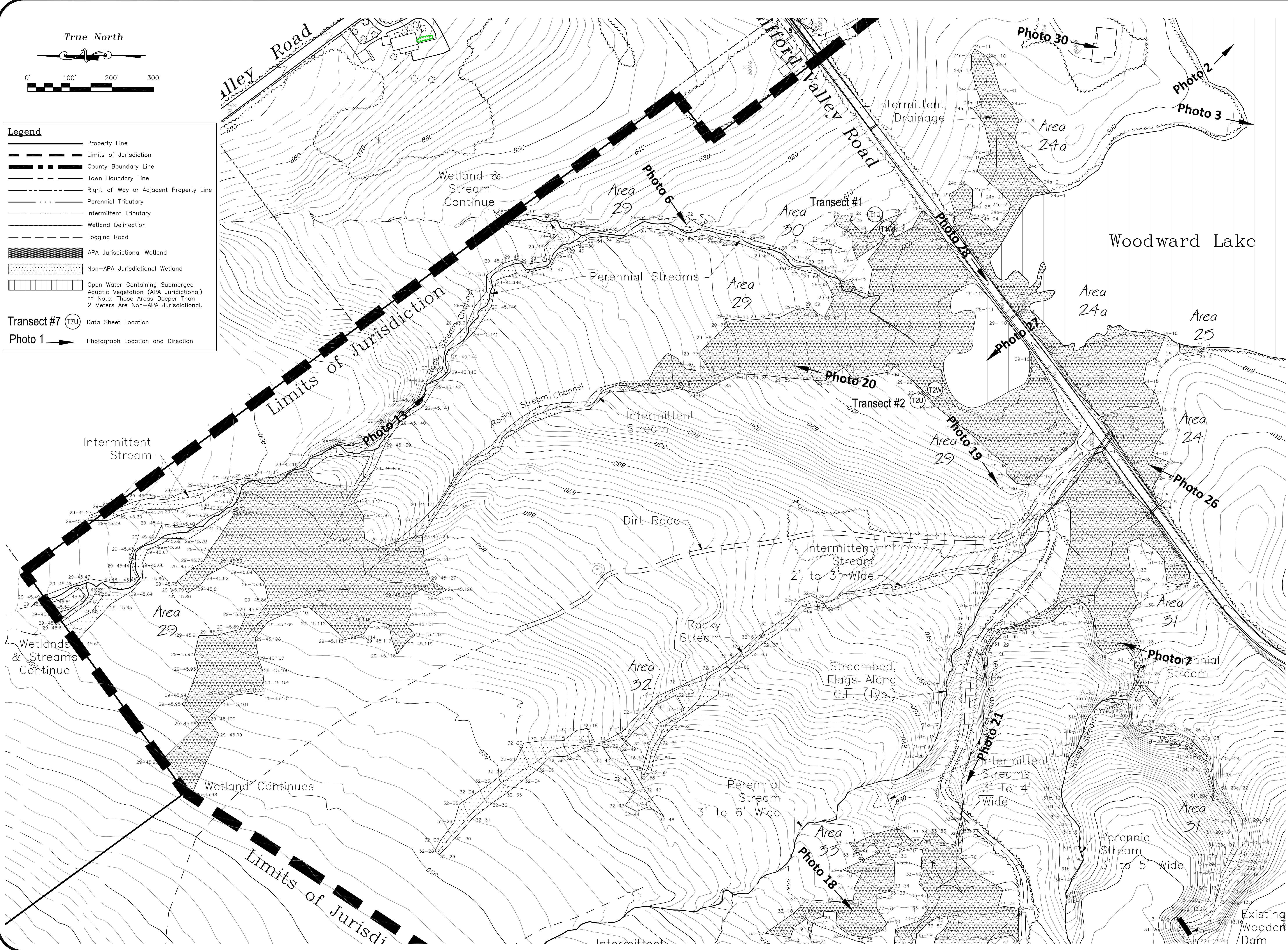


Legend

- Property Line
- Limits of Jurisdiction
- County Boundary Line
- Town Boundary Line
- Right-of-Way or Adjacent Property Line
- Perennial Tributary
- Intermittent Tributary
- Wetland Delineation
- Logging Road
- APA Jurisdictional Wetland
- Non-APA Jurisdictional Wetland
- Open Water Containing Submerged Aquatic Vegetation (APA Jurisdictional)
** Note: Those Areas Deeper Than 2 Meters Are Non-APA Jurisdictional.
- Data Sheet Location
- Photograph Location and Direction

Transect #7 (T7U)

Photo 1



CIVIL & ARCHITECTURAL
ENGINEERING
STEVEN E. SMITH, P.E.
25 WEST FULTON STREET
GLOVERSVILLE, N.Y. 12078
(518) 725-1555

Woodward Lake
Properties, LLC
Woodward Lake Subdivision
Town of Northampton
Fulton County, NY

Revised Per APA Comments	09/16/2020
Revised Per APA Comments Dated March 5th 2020	06/16/2020
No.	Date
Revision Schedule	
Construction Drawing	MM/00/YY
Bid Drawing	MM/00/YY
Drawing Log	

DRAWN BY: BCT/WRM

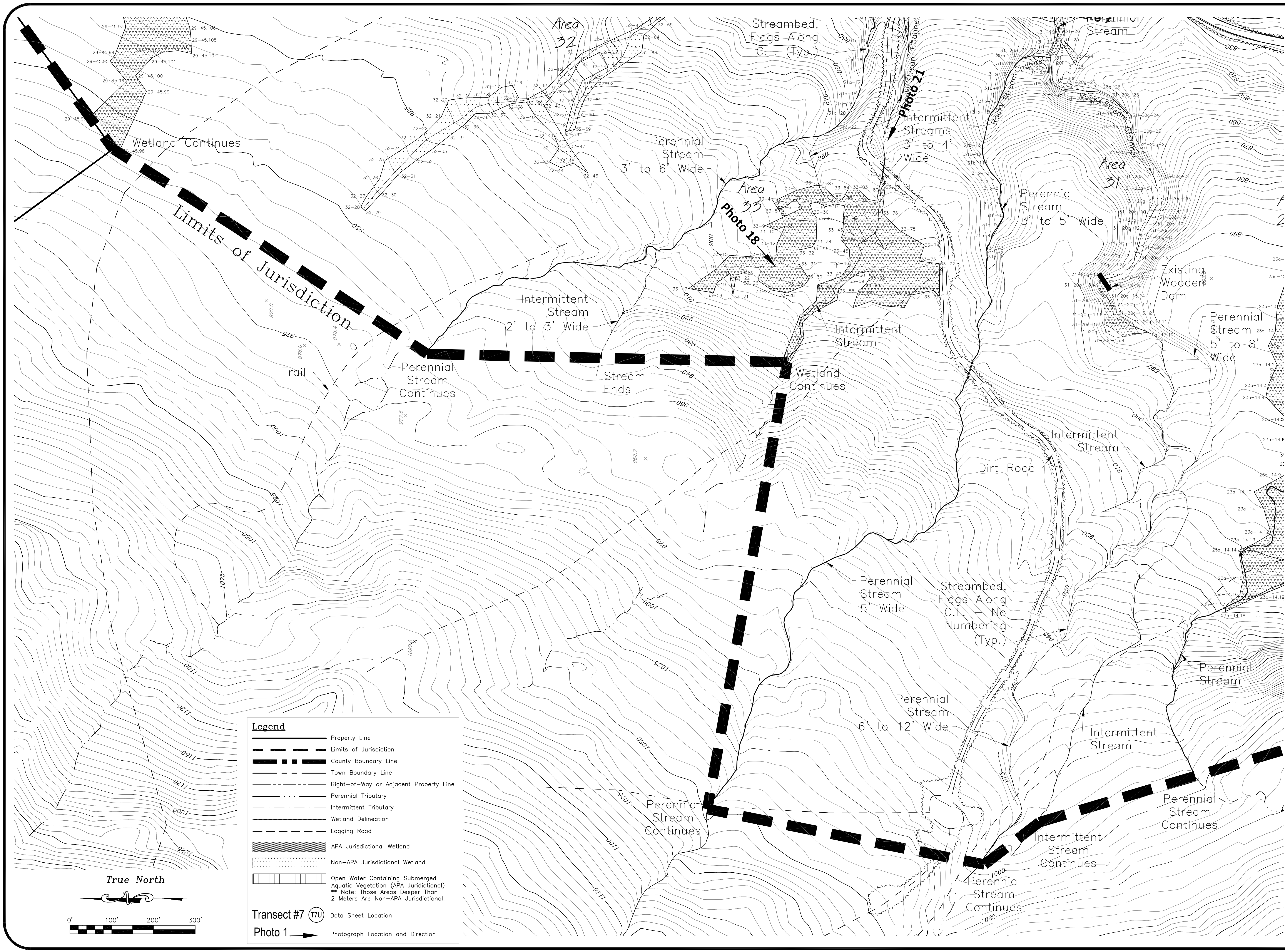
Copyright by Steven E. Smith, P.E. 2020
All Rights Reserved

Wetland Delineation

It is a violation for any person to offer the plan in any way, unless acting under the direction of an appropriately licensed person.

SHEET NAME:
North
Wetland Delineations
1" = 100'

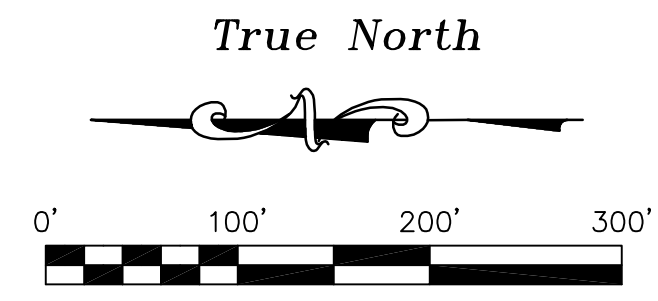
PAGE:
W-2



Legend

- Property Line
- Limits of Jurisdiction
- County Boundary Line
- Town Boundary Line
- Right-of-Way or Adjacent Property Line
- Perennial Tributary
- Intermittent Tributary
- Wetland Delineation
- Logging Road
- APA Jurisdictional Wetland
- Non-APA Jurisdictional Wetland
- Open Water Containing Submerged Aquatic Vegetation (APA Jurisdictional)
- Data Sheet Location
- Photograph Location and Direction

Transect #7 (7U)
Photo 1



Revised Per APA Comments	09/16/2020
Revised Per APA Comments Dated March 5th 2020	06/16/2020
No.	Date
Revision Schedule	
Construction Drawing	MM/00/YY
Bid Drawing	MM/00/YY
Drawing Log	

DRWN: BCT/WRM

Copyright by Steven E. Smith, P.E. 2020
All Rights Reserved

Wetland Delineation

It is a violation for any person to alter the plan in any way, unless acting under the direction of an appropriately licensed person.

SHEET NAME:
Northwest
Wetland Delineations
1" = 100'

PAGE:
W-3

Revised Per APA Comments	09/16/2020
Revised Per APA Comments Dated March 2020	06/16/2020
No. Description	Date
Revision Schedule	
Construction Drawing	MM/00/YY
Bid Drawing	MM/00/YY
Drawing Log	
DRAWN BCT/WRM	
BY:	
Copyright by Steven E. Smith, P.E. 2020 All Rights Reserved	

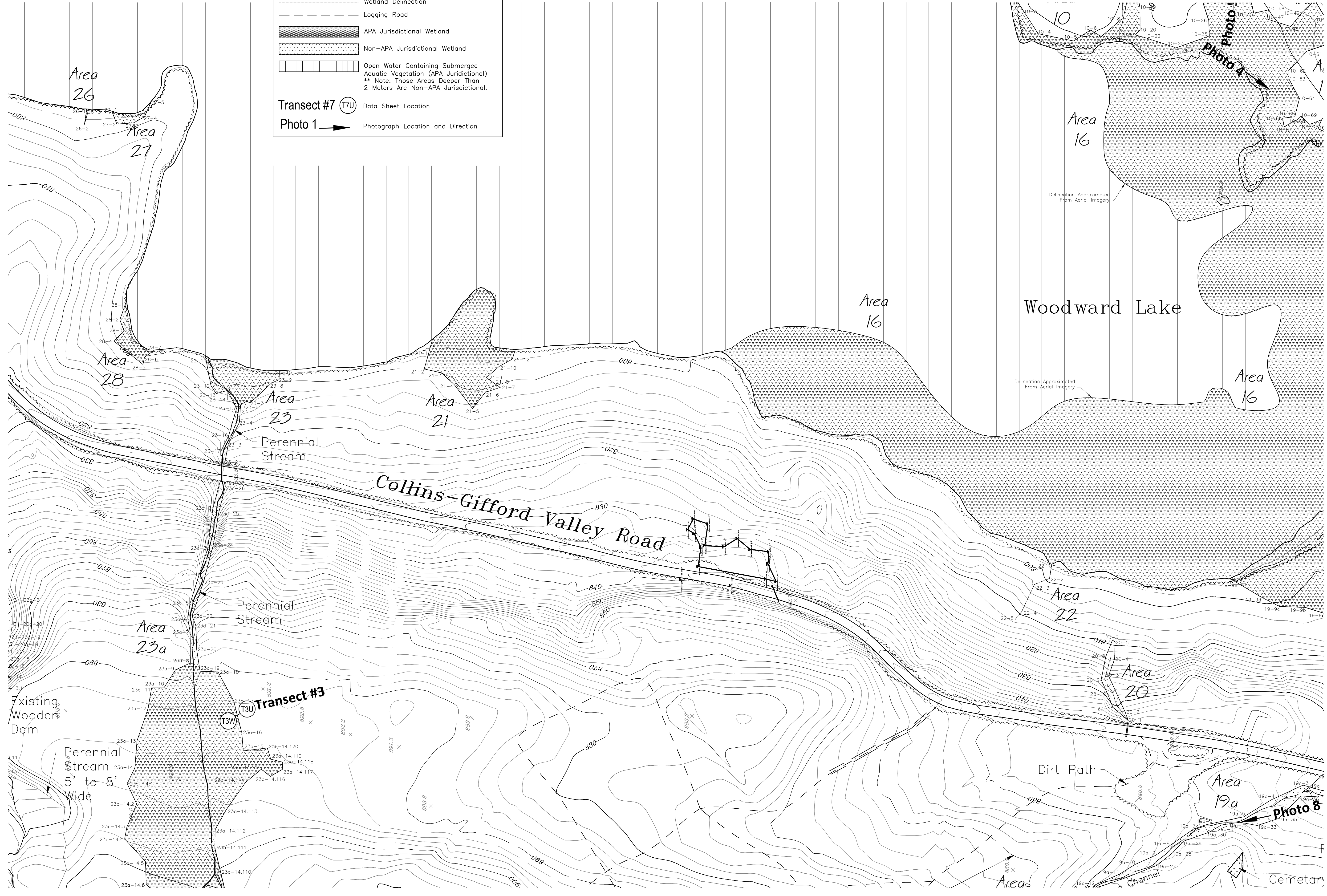
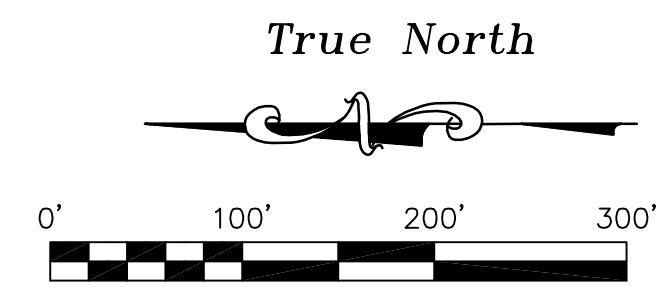
Wetland Delineation
It is a violation for any person to alter the plan in any way, unless acting under the direction of an appropriately licensed person.

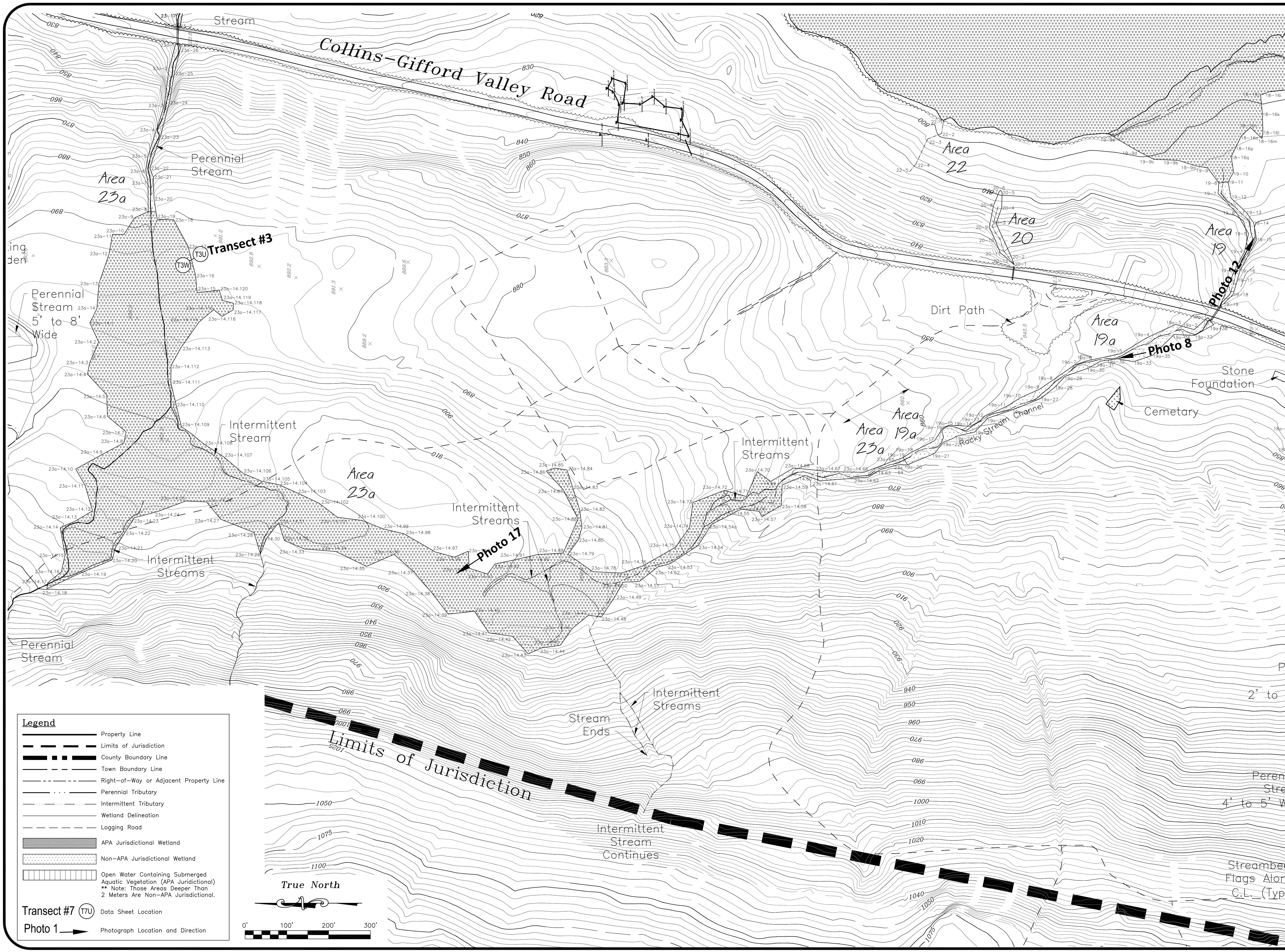
SHEET NAME:
Center
Wetland Delineations
1" = 100'

PAGE:
W-4

Legend

- Property Line
- - - Limits of Jurisdiction
- ▬▬▬ County Boundary Line
- - - Town Boundary Line
- - - Right-of-Way or Adjacent Property Line
- ⋯ Perennial Tributary
- · - · - Intermittent Tributary
- Wetland Delineation
- - - Logging Road
- ▨ APA Jurisdictional Wetland
- ▤ Non-APA Jurisdictional Wetland
- ▧ Open Water Containing Submerged Aquatic Vegetation (APA Jurisdictional)
** Note: Those Areas Deeper Than 2 Meters Are Non-APA Jurisdictional.
- ⊙ Transect #7 (T7U) Data Sheet Location
- ➔ Photo 1 Photograph Location and Direction



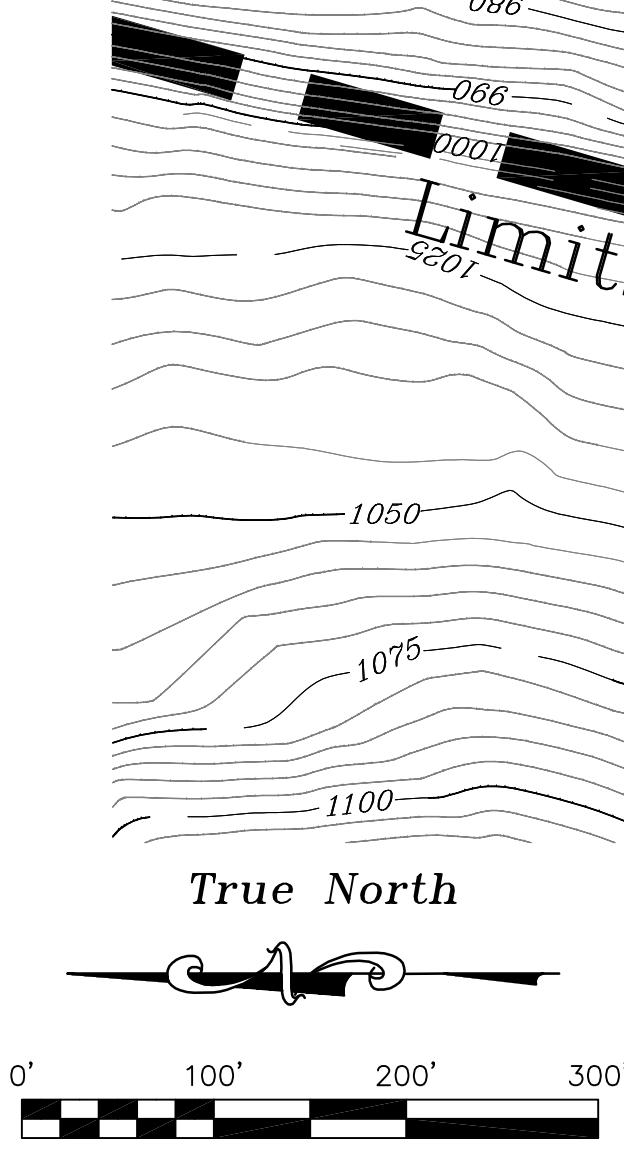


Legend

- Property Line
- - - Limits of Jurisdiction
- County Boundary Line
- - - Town Boundary Line
- - - Right-of-Way or Adjacent Property Line
- Perennial Tributary
- - - Intermittent Tributary
- Wetland Delineation
- - - Logging Road
- APA Jurisdictional Wetland
- Non-APA Jurisdictional Wetland
- Open Water Containing Submerged Aquatic Vegetation (APA Jurisdictional)
** Note: Those Areas Deeper Than 2 Meters Are Non-APA Jurisdictional.

Transect #7 (T7U) Data Sheet Location

Photo 1 Photograph Location and Direction



No.	Description	Date
1	Revised Per APA Comments	09/16/2020
2	Revised Per APA Comments Dated March 2020	06/16/2020
Revision Schedule		
Construction Drawing		MM/DD/YY
Bid Drawing		MM/DD/YY
Drawing Log		

BY: **BCT/WRM**

Copyright by Steven E. Smith, P.E. 2020
All Rights Reserved

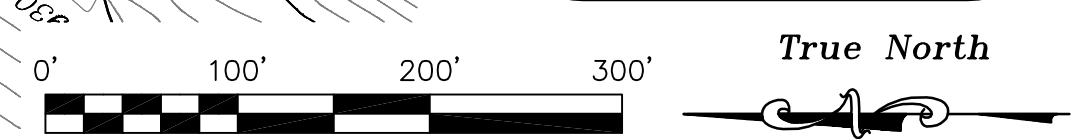
Wetland Delineation
It is a violation for any person to alter the plan in any way, unless acting under the direction of an appropriately licensed person.

SHEET NAME:
Northwest
Wetland Delineations
1" = 100'

PAGE:
W-5

CIVIL & ARCHITECTURAL
ENGINEERING
STEVEN E. SMITH, P.E.
25 WEST FULTON STREET
GLOVERSVILLE, N.Y. 12078
(518) 725-1555

Woodward Lake
Properties, LLC
Woodward Lake Subdivision
Town of Northampton
Fulton County, NY



Legend

	Property Line
	Limits of Jurisdiction
	County Boundary Line
	Town Boundary Line
	Right-of-Way or Adjacent Property Line
	Perennial Tributary
	Intermittent Tributary
	Wetland Delineation
	Logging Road
	APA Jurisdictional Wetland
	Non-APA Jurisdictional Wetland
	Open Water Containing Submerged Aquatic Vegetation (APA Jurisdictional) ** Note: Those Areas Deeper Than 2 Meters Are Non-APA Jurisdictional.
	Transect #7 (T7U) Data Sheet Location
	Photo 1 Photograph Location and Direction



	Revised Per APA Comments	09/16/2020
	Revised Per APA Comments Dated March 29, 2020	06/16/2020
No.	Description	Date
	Revision Schedule	
	Construction Drawing	MM/DD/YY
	Bid Drawing	MM/DD/YY
	Drawing Log	

DRAWN BY: BCT/WRM

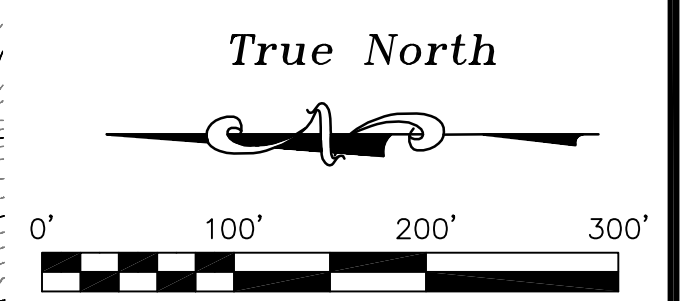
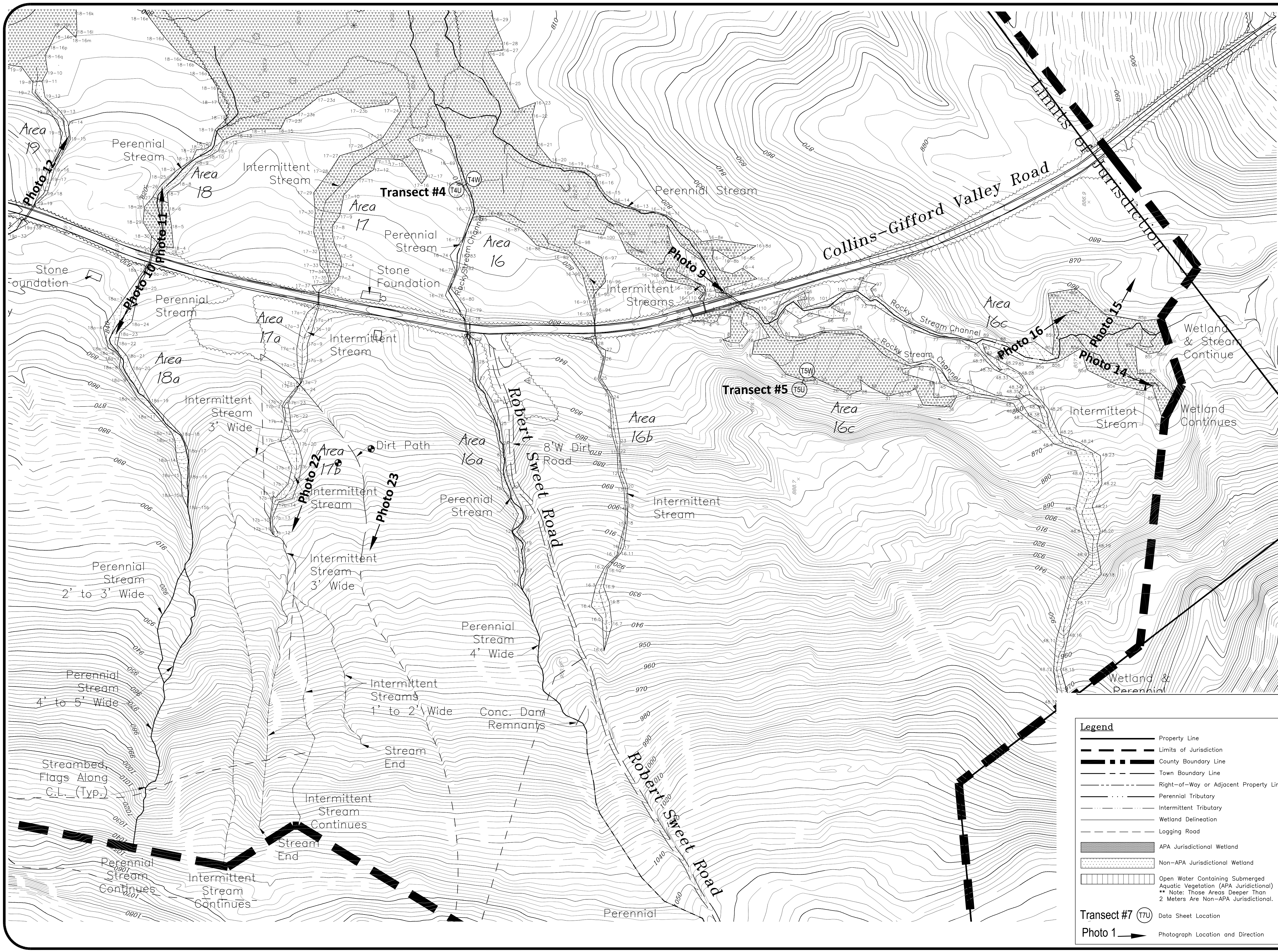
Copyright by Steven E. Smith, P.E. 2020
All Rights Reserved

Wetland Delineation

It is a violation for any person to alter the plan in any way, unless acting under the direction of an appropriately licensed person.

SHEET NAME:
Center
Wetland Delineations
1" = 100'

PAGE:
W-6



Revised Per APA Comments	09/16/2020
Revised Per APA Comments Dated March 5th 2020	06/16/2020
No. Description	Date
Revision Schedule	
Construction Drawing	MM/DD/YY
Bid Drawing	MM/DD/YY
Drawing Log	
DRAWN BY: BCT/WRM	

Copyright by Steven E. Smith, P.E. 2020
All Rights Reserved

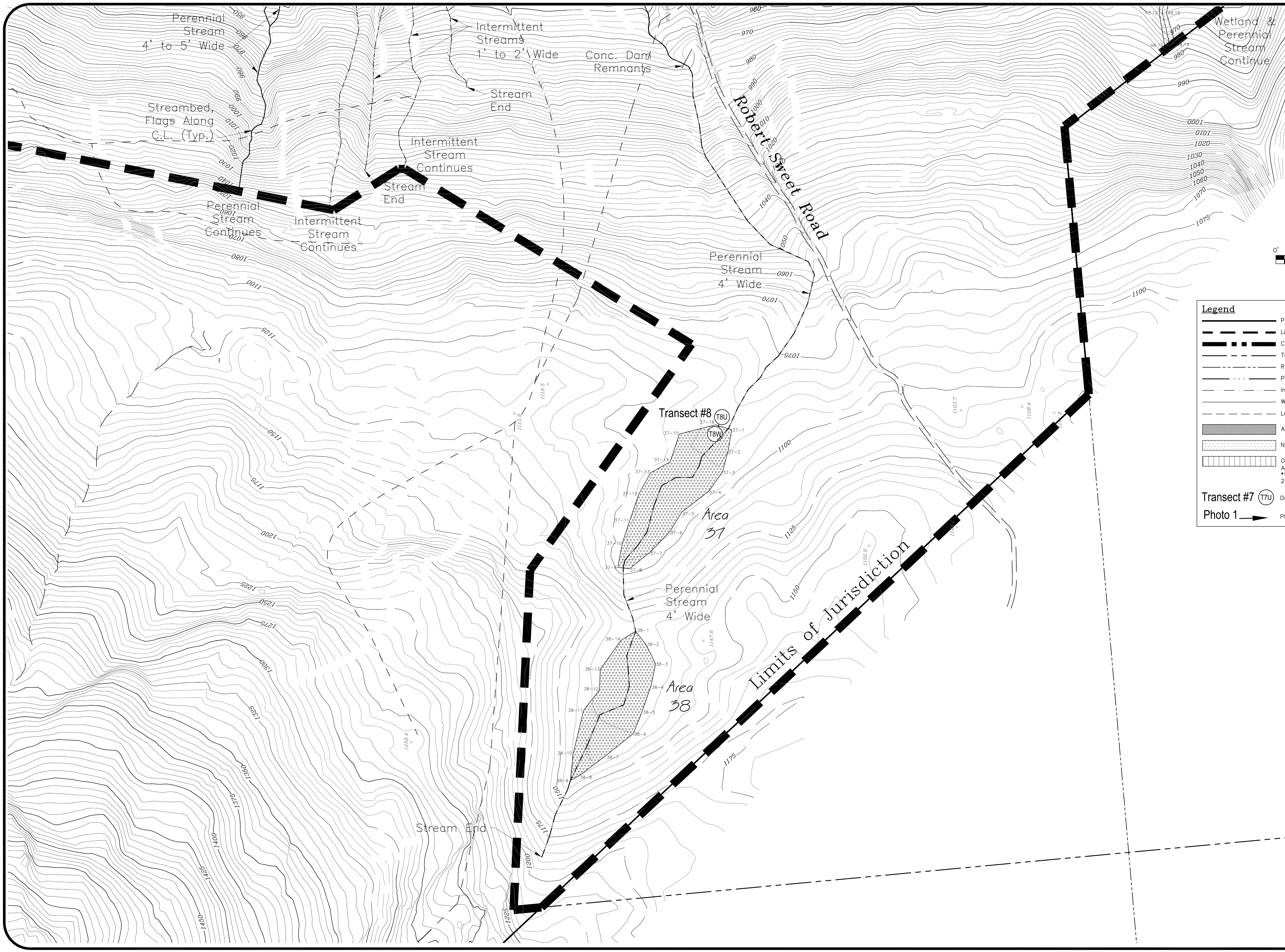
Wetland Delineation
It is a violation for any person to alter the plan in any way, unless acting under the direction of an appropriately licensed person.

SHEET NAME:
Center
Wetland Delineations
1" = 100'

PAGE:
W-7

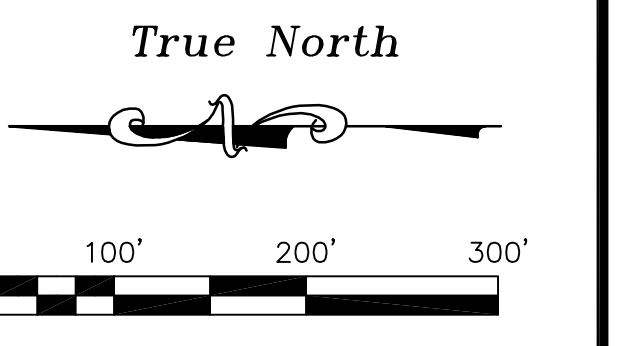
Legend

- Property Line
- Limits of Jurisdiction
- County Boundary Line
- Town Boundary Line
- Right-of-Way or Adjacent Property Line
- Perennial Tributary
- Intermittent Tributary
- Wetland Delineation
- Logging Road
- APA Jurisdictional Wetland
- Non-APA Jurisdictional Wetland
- Open Water Containing Submerged Aquatic Vegetation (APA Jurisdictional)
* Note: Those Areas Deeper Than 2 Meters Are Non-APA Jurisdictional.
- Transect #7 (T7U) Data Sheet Location
- Photo 1 Photograph Location and Direction



**CIVIL & ARCHITECTURAL
ENGINEERING**
STEVEN E. SMITH, P.E.
 25 WEST FULTON STREET
 GLOVERSVILLE, N.Y. 12078
 (518) 725-1555

Woodward Lake
 Properties, LLC
 Woodward Lake Subdivision
 Town of Northampton
 Fulton County, NY



Legend

	Property Line
	Limits of Jurisdiction
	County Boundary Line
	Town Boundary Line
	Right-of-Way or Adjacent Property Line
	Perennial Tributary
	Intermittent Tributary
	Wetland Delineation
	Logging Road
	APA Jurisdictional Wetland
	Non-APA Jurisdictional Wetland
	Open Water Containing Submerged Aquatic Vegetation (APA Jurisdictional) ** Note: Those Areas Deeper Than 2 Meters Are Non-APA Jurisdictional.
	Transect #7 (TU) Data Sheet Location
	Photo 1 Photograph Location and Direction

	Revised Per APA Comments	09/16/2020
	Revised Per APA Comments Dated March 5th 2020	06/16/2020
No.	Description	Date
	Revision Schedule	
Construction Drawing		MM/DD/YY
Bid Drawing		MM/DD/YY
Drawing Log		
DRAWN BCT/WRM		
BY:		

Copyright by Steven E. Smith, P.E. 2020
 All Rights Reserved

Wetland Delineation

It is a violation for any person to alter the plan in any way, unless acting under the direction of an appropriately licensed person.

SHEET NAME:
 Southwest
 Wetland Delineations
 1" = 100'

PAGE:
W-8